



DRESS CODE

MUNBOLDT 2026

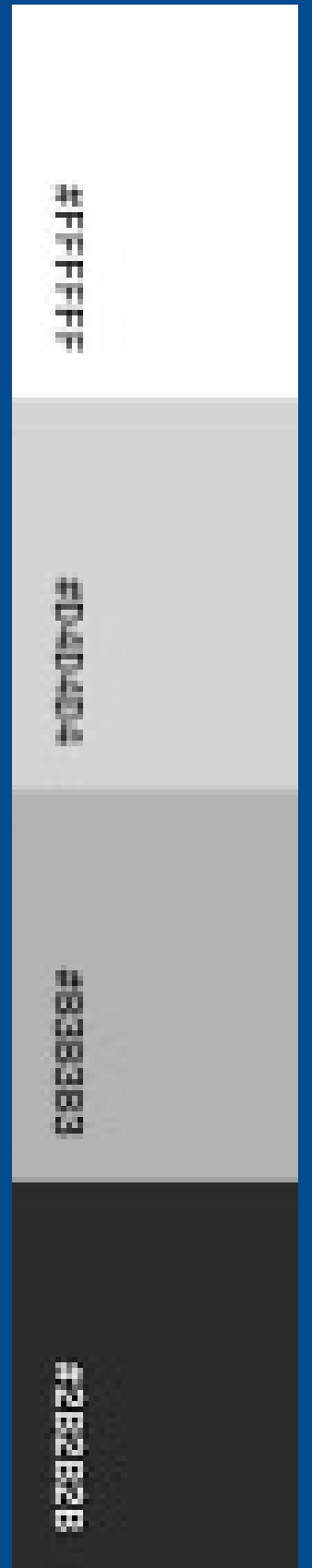
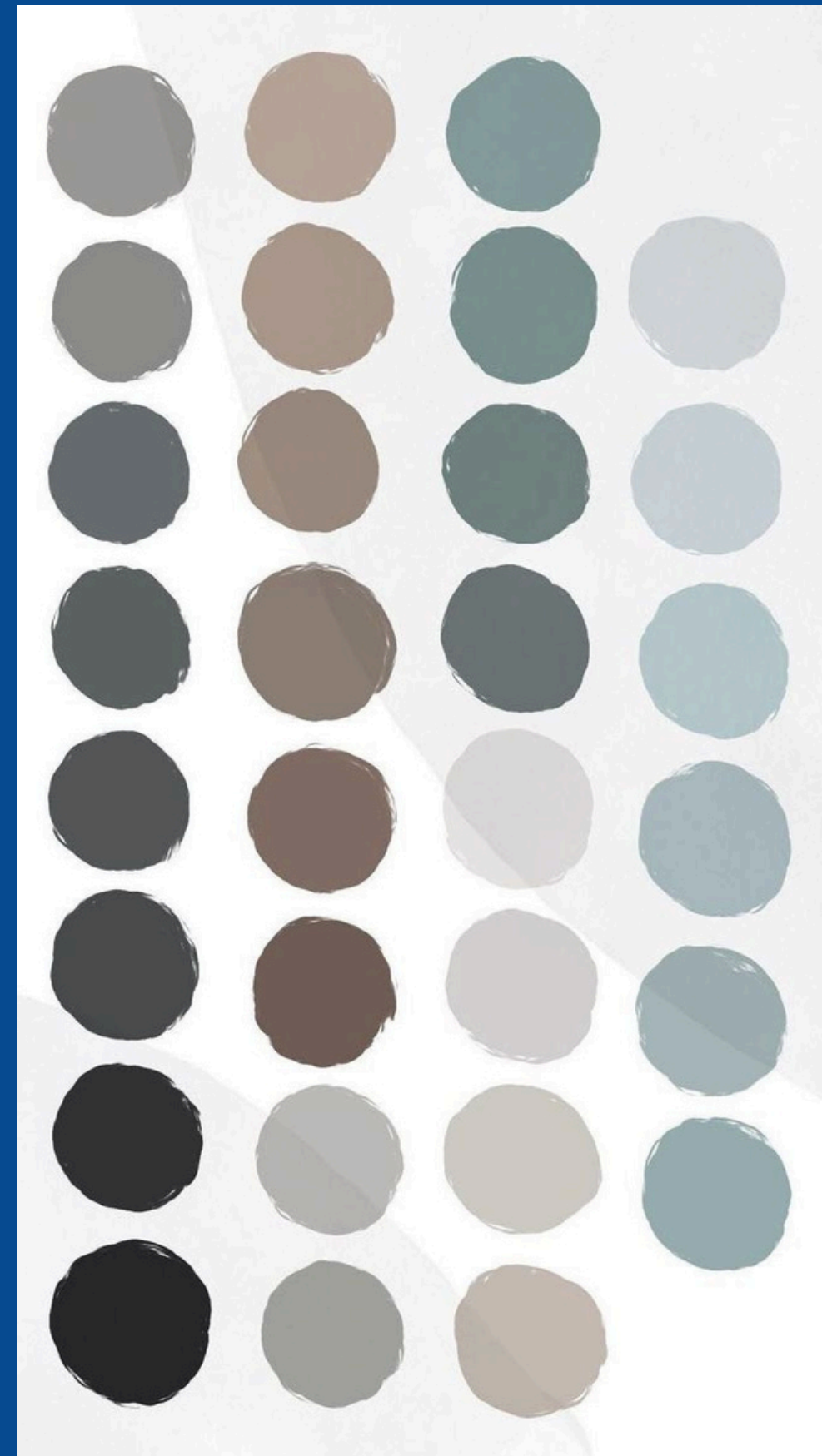
INDEX

1. **Allowed Color Palette**
2. **Forbidden Color Palette**
3. **Tops**
4. **Bottoms**
5. **Skirts**
6. **Shoes**
7. **Coats and suits**
8. **Ties**
9. **Makeup**
10. **Accessories**

The following color palette will serve as reference for the allowed colors:

Allowed Color Palette

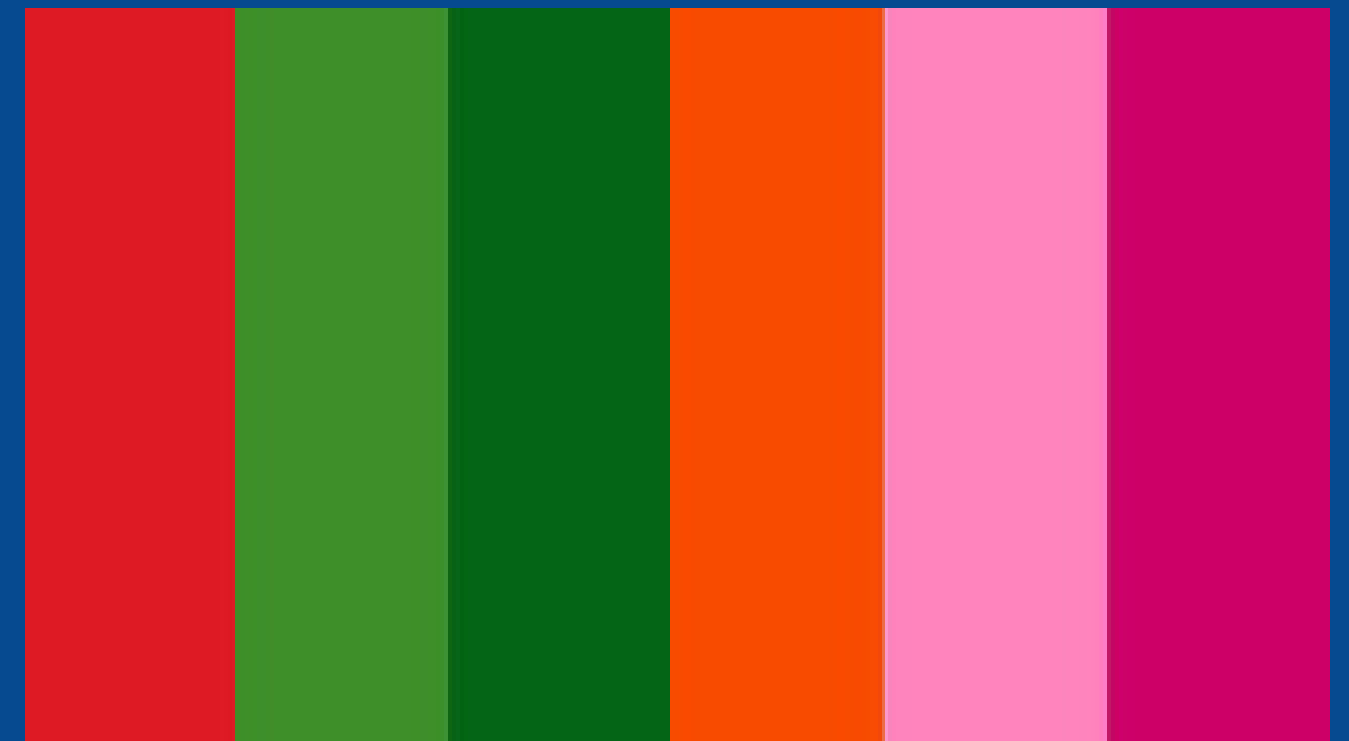
Delegates are encouraged to use a professional color palette. Appropriate colors include blue, white, grey, and black.



Forbidden Color Palette

Colors that may draw excessive attention, such as red, green, and orange, should be avoided.

The following color palette will serve as reference for the forbidden colors:



Tops

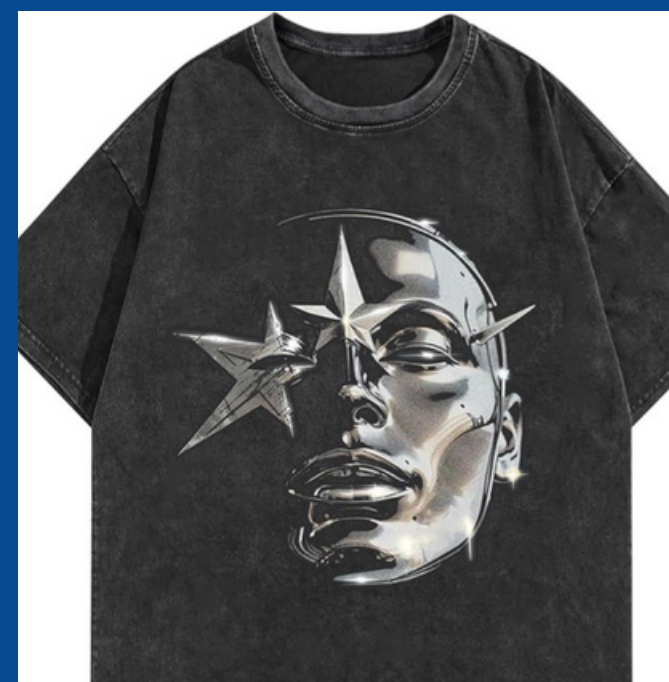
Shirts and blouses must not be see-through, show cleavage or expose too much skin.

T-shirts, low-cut blouses, tops with graphic prints, and sports clothing are strictly forbidden.

Allowed shirts and blouses



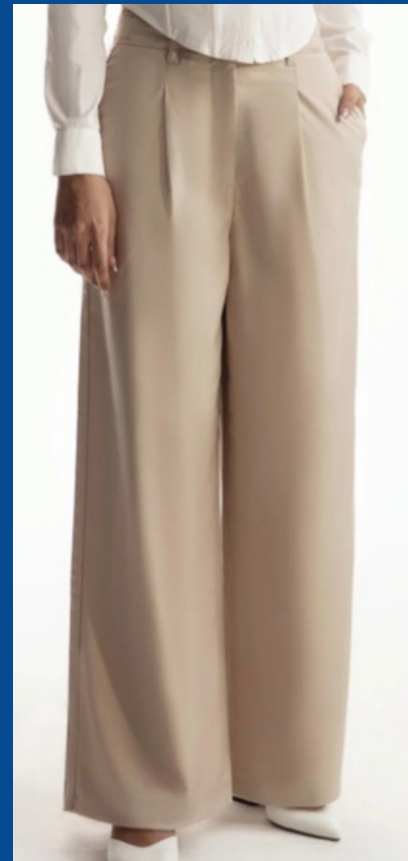
Forbidden shirts and blouses



Bottoms

Jeans,
sweatpants,
leggings, shorts,
and khakis are
strictly
forbidden.

Allowed bottoms



Forbidden bottoms

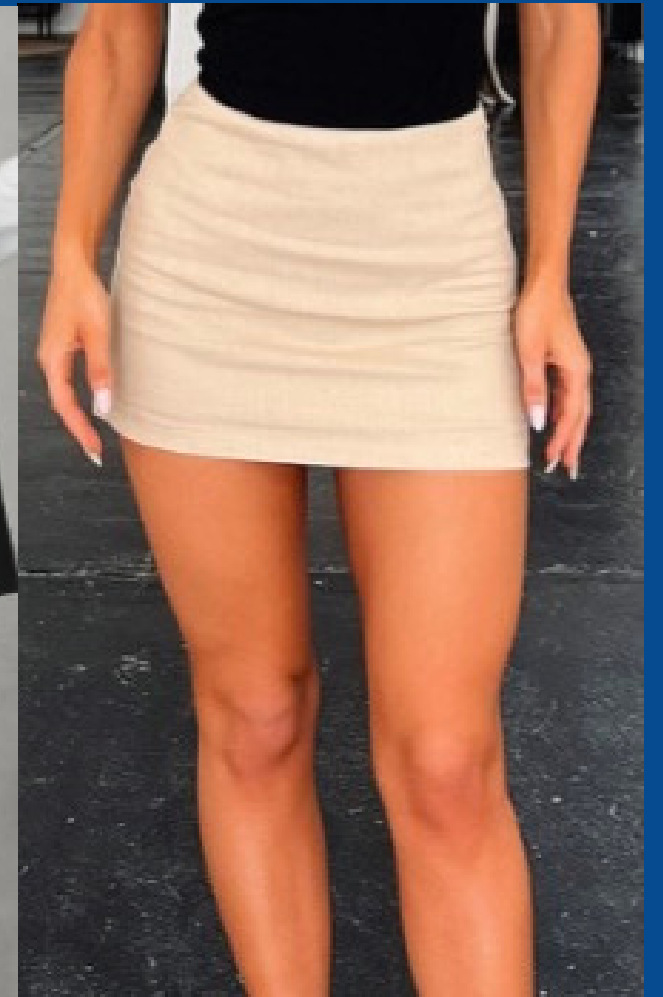
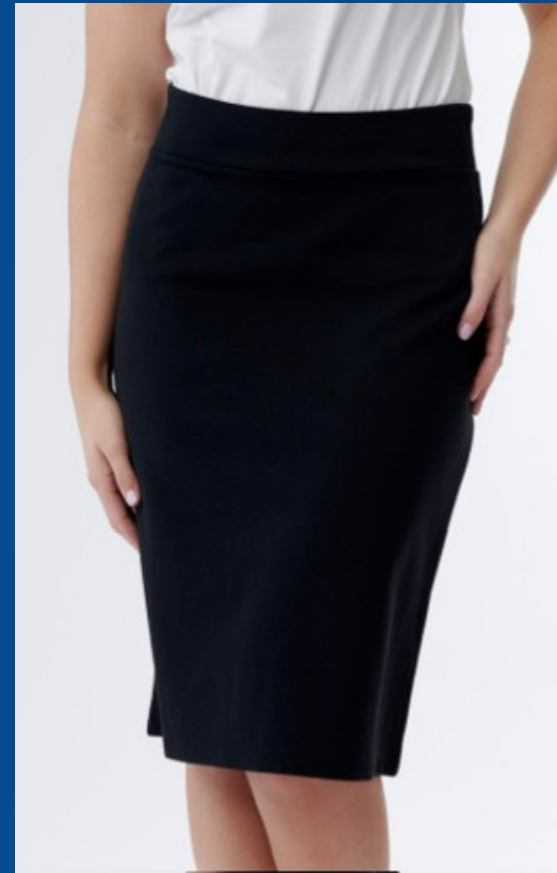


SKIRTS

Allowed skirts

Forbidden skirts

All skirts
and dresses
must be
knee-length
or longer.



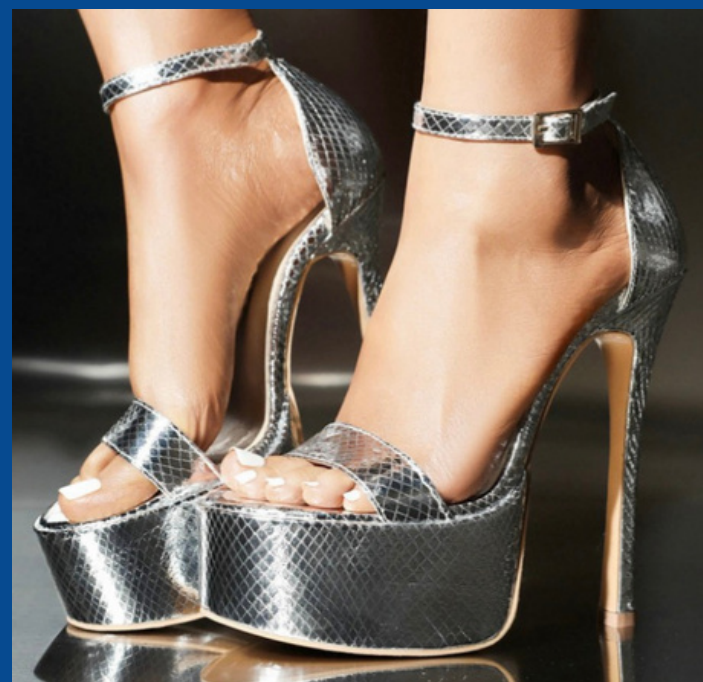
SHOES

Crocs, sandals, sneakers, sleepers, and high heels that do not completely cover the toes are strictly prohibited.

Allowed



Forbidden



COATS AND SUITS

Formal coats and suits must align with the allowed color palette.

Flashy coats with graphic designs are strictly forbidden.



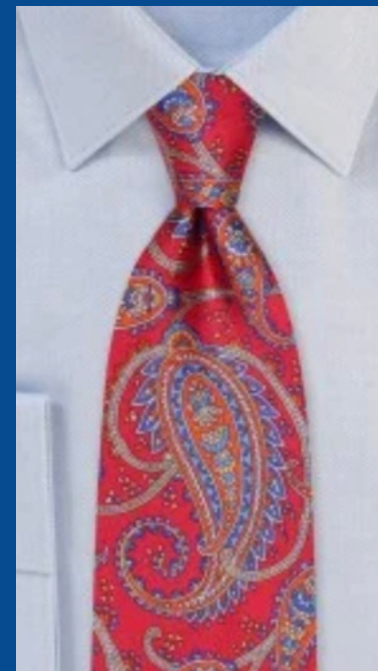
TIES

Ties that have exotic graphic designs or that do not align with the allowed color palette are strictly forbidden.

Allowed



Forbidden



MAKEUP

Makeup must
be simple,
bright colors
are not
allowed.



ACCESSORIES

Accessories must be simple and align with the allowed color palette.

